

Connects deck boards to joists without face nails or screws. Eliminates rust stains on decks, as well as splintering or wood rot caused by screw or nail "craters". The DC50-TZ works like tongue-in-groove flooring and is easy to install. Raised dimples on the clip provide consistent spacing between deck boards.

**Materials:** 20 gauge

**Finish:** G-185 galvanizing

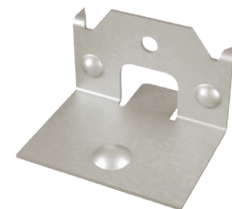
**Options:** See chart for Corrosion Finish Options

**Installation:**

- Use all specified fasteners. See Product Notes, page 18.
- Fits 1-1/8" or thicker decking.
- Fasten the first deck board onto the joists by toenailing up through the joist below into the deck board. Be sure no sharp points protrude above the deck surface. For subsequent deck board rows, nail DC50-TZ's onto the deck board edge, positioned 2" from each joist. Slide the deck board along the joist until the DC50-TZ "lip" is under the previously laid deck board. Toenail the deck board's exposed edge to the joist. Repeat until decking is completed. The last deck board will require toenailing up from below to secure the outside edge.



Typical DC50-TZ installation



DC50-TZ

MiTek USP Stock No.	Ref. No.	Steel Gauge	Fastener Schedule <sup>1,2</sup>		Corrosion Finish	Code Ref.
			Qty	Type		
DC50-TZ	DBT1Z	20	1	8d x 1-1/2 HDG	Green	--

- 1) Use with 1-1/8" or thicker wood decking.
- 2) **NAILS:** 8d x 1-1/2 nails are 0.131" dia. x 1-1/2" long.

**Corrosion Finish** ■ Stainless Steel ■ Gold Coat ■ HDG ■ Triple Zinc

ML Angles

ML angles are multi-purpose angles that install easily with MiTek's WS15 structural wood screws. The staggered fastener pattern allows for back-to-back installations.

**Materials:** 12 gauge

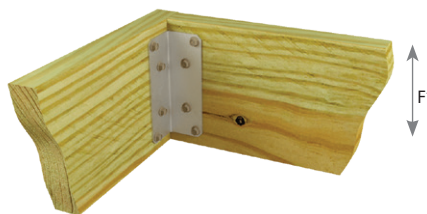
**Finish:** G-185 galvanizing

**Options:** See chart for Corrosion Finish Options

**Codes:** IBC, FL, LA

**Installation:**

- Use all specified fasteners. See Product Notes, page 18.
- MiTek's WS15 (1/4" dia x 1-1/2" long) structural wood screws are not supplied with ML angles.



Typical ML26-TZ installation (ML24-TZ similar)



ML26-TZ (ML24-TZ similar)

MiTek USP Stock No.	Ref. No.	Steel Gauge	Dimensions (in)		Fastener Schedule <sup>2,3</sup>			DF/SP Allowable Loads (Lbs.) <sup>1</sup>				S-P-F Allowable Loads (Lbs.) <sup>1</sup>				Corrosion Finish	Code Ref.
			W	H	Header Qty	Joist Qty	Type	F1				F1					
								100%	115%	125%	160%	100%	115%	125%	160%		
ML24-TZ	ML24Z	12	2	4	3	3	WS15	655	655	655	655	565	650	655	655	Green	IBC, FL, LA
ML26-TZ	ML26Z	12	2	6	4	4	WS15	920	1060	1090	1090	755	865	940	1090	Green	FL, LA

- 1) Allowable loads have been increased 60% for wind and seismic loads; no further increase shall be permitted.
- 2) MiTek's WS15 structural wood screws are 1/4" dia. x 1-1/2" long and are not included with angles.
- 3) For exterior applications use MiTek's WS15-EXT structural wood screws with exterior coat finish. New products or updated product information are designated in blue font.

**Corrosion Finish** ■ Stainless Steel ■ Gold Coat ■ HDG ■ Triple Zinc